

GRI

WE'LL GET YOU THERE



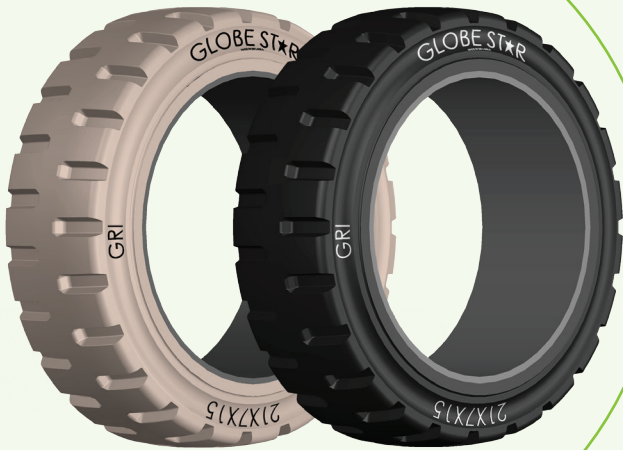
GLOBE STAR POB
STANDARD

MATERIAL HANDLING TIRES

GLOBE STAR

PRESS ON BAND (POB) TIRES

A wear abrasion and tear resistant tread of a perfected natural rubber compound is vulcanized onto a precision band using a new 'global-lock' bonding process, which virtually locks the rubber to steel base bands. GLOBESTAR POB is a great cushion tire ensuring reduced downtime and increased load capacity.



ENERGY SAVING

Very good energy saving due to very low rolling resistance.



OPERATING TIME

Very good operating time due to low heat build-up and low cost per hour.



LIFE TIME

Ideal tire life and reduced maintenance cost.



CORNERING STABILITY

Maximum cornering stability enabling high level of safety and comfort.



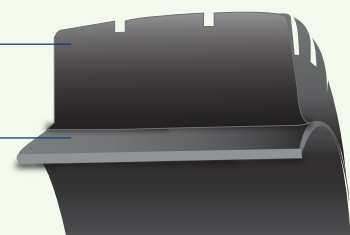
Wide footprint
for better stability

Used global lock
bonding process to
precision the band.



Tread Compound

Steel Band



Tyre Size		Sm	Lug	Tire load capacity on forklifts at Max. Speed			
				10 Miles/h (Lbs)		16 Km/h (Kg)	
Inch	mm			Load Wheel	Steer Wheel	Load Wheel	Steer Wheel
10x4x6 1/2	254/102-165	•		1530	1290	695	585
10x5x6 1/2	254/127-165	•	•	1995	1675	905	760
10 1/2 x5x 6 1/2	267/127-165			2113	1772	960	805
10x4 3/4x6 1/2	254/121-165			1874	1579	850	716
13 1/2x4 1/2x8	343/114-203	•		2205	1850	1000	840
13 1/2x5 1/2x8	343/140-203	•		2965	2490	1345	1130
13 1/2x6 1/2x8	343/165-203	•		3240	2710	1470	1230
12 x 4 1/2 x8	305/114-203	•	•	2072	1477	940	670
14x4 1/2x8	356/114-203	•	•	2300	1930	1045	875
14x5x10	356x127-254	•		2648	2207	1200	1000
15x5x11 1/4	381/127-286	•		2735	2305	1240	1045
15x6x11 1/4	381/152-286	•		3385	2845	1535	1290
16x5x10 1/2	406/127-267	•	•	2965	2490	1345	1130
16x6x10 1/2	406/152-267	•	•	3770	3165	1710	1435
16x7x10 1/2	406/178-267	•		4563	3836	2070	1740
16 1/4x5x11 1/4	413/127-286	•		3000	2525	1360	1145
16 1/4x6x111/4	413/152-286	•	•	3780	3175	1715	1440
16 1/4x7x111/4	413/178-286	•		4555	3825	2065	1735
18x5x12 1/8	457/127-308	•		3230	2710	1465	1230
18x6x12 1/8	457/152-308	•	•	4120	3470	1870	1575
18x7x12 1/8	457/178-308	•	•	5925	4220	2280	1915
18x8x12 1/8	457/203-308	•	•	5920	4970	2685	2255
18x9x12 1/8	457/229-308	•	•	6810	5720	3090	2595
21x6x15	533/152-381		•	4640	3890	2105	1765
21x7x15	533/178-381	•	•	5645	4740	2560	2150
21x8x15	533/203-381	•	•	6660	5590	3020	2535
22x8x16	559/203-406	•	•	6900	5790	3130	2625
22x9x16	559/229-406	•	•	7950	6670	3605	3025
22x10x16	559/254-406	•		8995	7550	4080	3425
22x12x16	559/305-406	•		11090	9315	5030	4225
	645/200-410	•		9215	7561	4180	3430
	645/250-410	•		10420	8552	4725	3878
28x10x22	711/254-559	•		10285	8290	4665	3760
28x12x22	711/305-559	•		12135	10230	5505	4640
22x16x16	559/406-406	•		13850	11640	6925	5820
40x16x30	1016/406-762	•		21610	17740	10805	8870
40x20x30	1016/508-762	•		30910	25400	14020	11520



GRI produces high-grade specialty tires that are built sustainably using pure natural rubber in Sri Lanka. Founded in 2002, the company produces material handling solid tires, radial agriculture tires and construction tires. GRI has operations in 9 countries, and a business presence in more than 50 countries. In 2018, GRI opened an advanced manufacturing plant in Sri Lanka to produce radial agricultural tires. In 2020, GRI commenced construction of a large mixing facility for tire compounds and in 2021 began further expansion of its advanced specialty tire plant. GRI ensures its commitment to sustainability and environmental protection through all its strategies and processes. Environmentally sustainable growth is our strategic goal, both now and for generations to come.

info@gritires.com
www.gritires.com

www.facebook.com/GRI tires/
www.instagram.com/gritires/?hl=en

LIMITED WARRANTY

All tires manufactured by Global Rubber Industries (Pvt) Ltd are covered by limited warranty, which includes cover against material, workmanship and other manufacturing defects subject to the usage of the tires under specified conditions. If any tire covered by this warranty is deemed unserviceable due to aforementioned defects, we will either repair the tire or provide an allowance to purchase a new tire at the current price as a percentage of the worn off tread of the original tire at the time of making the claim.

The cost of transportation, service and paid sales tax will be borne by the owner of the claimed tire. The limited warranty is exclusively applicable to the tire owner who is using the product. No other warranty of liability, expressed or implied, is applicable to the limited warranty or to our products.